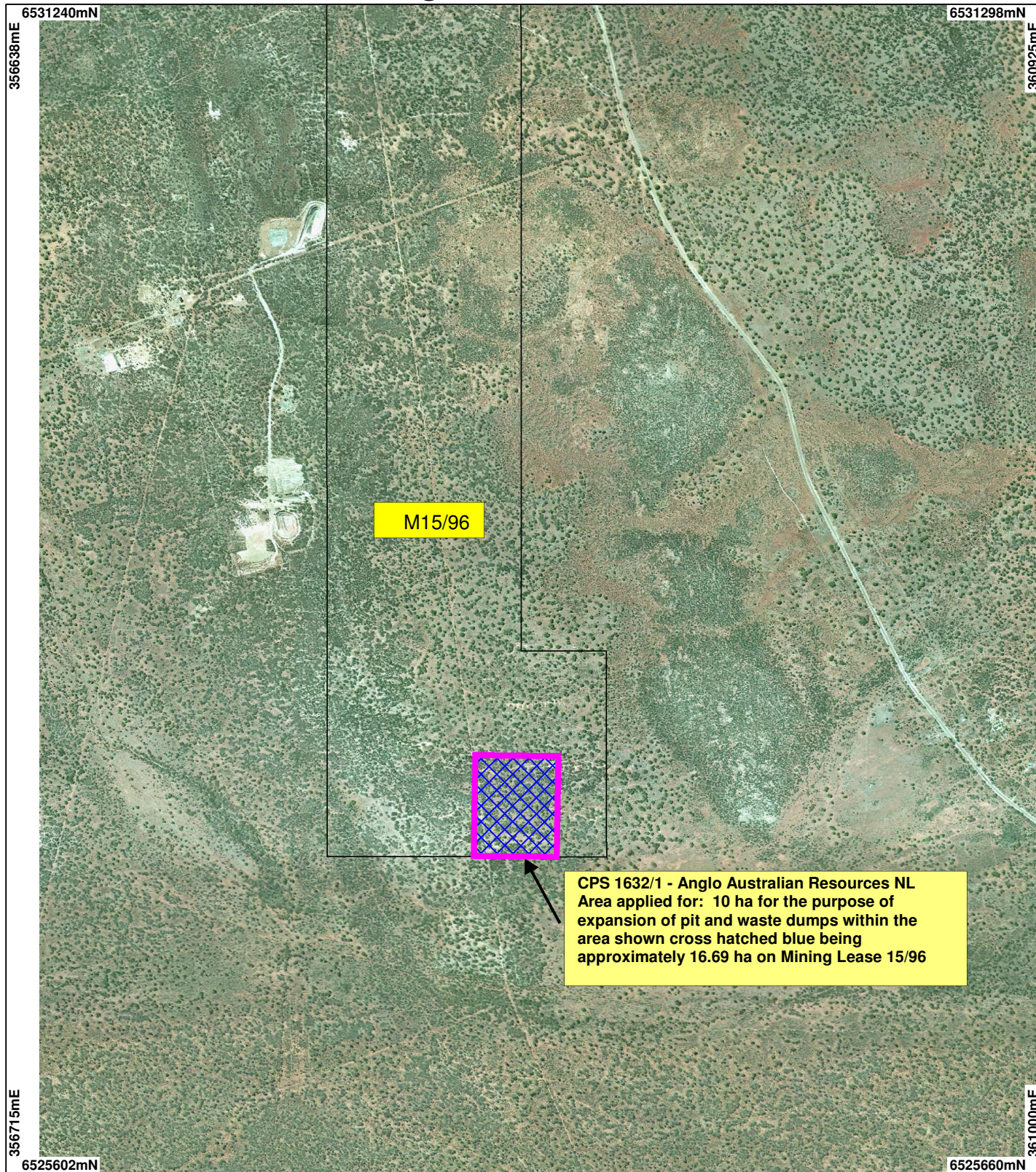


CPS 1632/1 - Anglo Australian Resources NL



CPS 1632/1 - Anglo Australian Resources NL
Area applied for: 10 ha for the purpose of expansion of pit and waste dumps within the area shown cross hatched blue being approximately 16.69 ha on Mining Lease 15/96

LEGEND

Clearing instruments

-  Areas Applied to Clear
-  Mining Tenements - DOIR_1
-  Lake Lefroy 1.4m Orthomosaic
- DLI 02



Scale 1:25000

(Approximate when reproduced at A4)

Geocentric Datum Australia 1994

Note: the data in this map have not been projected. This may result in geometric distortion or measurement inaccuracies.

..... Date

Officer with delegated authority under Section 20 of the Environmental Protection Act 1986

Information derived from this map should be confirmed with the data custodian acknowledged by the agency acronym in the legend.



WA Crown Copyright 2002

* Project Data. This data has not been quality assured. Please contact map author for details.